



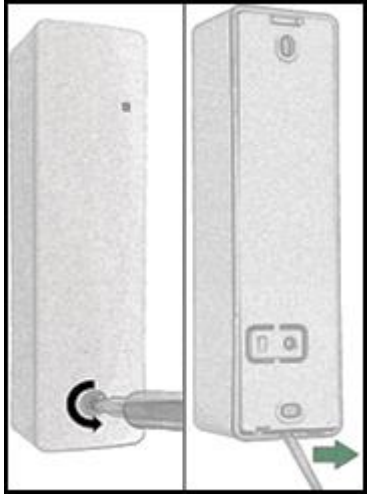
QUICK INSTALLATION GUIDE

DRY CONTACT DEVICE (LAN-WMBUS-G2-DC)



Recommended mounting instructions:

- For best horizontal range, place the device upright
- For best vertical range, place the device horizontally
- For maximum range, mount the device and receiver so they have the same polarization
- Avoid placing directly against metallic objects to maximize range
- Mount with either double-sided tape or screws



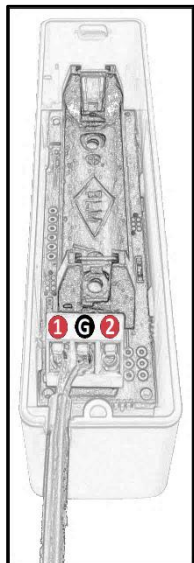
Step 1a (left):

Open the device using a torx screwdriver on the front screw. Unscrew by turning counterclockwise.

Step 1b (right):

Separate the back piece by using, for example, a screwdriver at the bottom of the device as in the right picture.

Once opened, the PCB will be visible on the inside.



Remove battery before mounting/unmounting cables!

Step 2:

The device can have two dry contact connected to it. Cut out the plastic at the bottom according to the picture before mounting any cables.

For the first dry contact, connect the first cable to input marked by (1) and the other cable to (G). If another dry contact is wanted, connect one cable to input marked by (2) and the other to (G).

Note: Do NOT let a cable cover the hole at the bottom.

Once the cables are connected, insert the battery again.

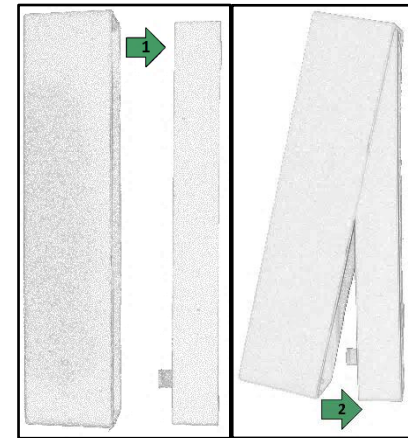
Step 3:



Mount the back piece to a wall according to the recommended mounting instructions on the first page.

If screws are used, fasten the screws in the holes marked by red in the picture.

If the device should alert when removed from a wall, then fasten a third screw in the hole marked by green in the picture (only applicable for devices with sabotage detection switch).

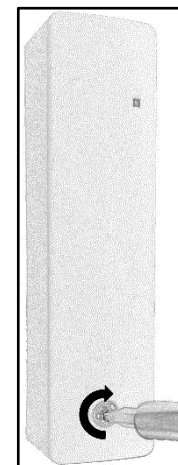


Step 4a (left):

See picture in **Step 3** on the orientation of the device, then insert the top part of the front piece onto the top part of the back piece (1).

Step 4b (right):

Insert the bottom part of the front piece onto the bottom part of the back piece (2).



Step 5:

Put the torx screw (from **Step 1**) in the hole at the front and tighten the screw using a torx screwdriver.

Make sure that the device is securely mounted.

Installation is complete!